

# What Bug is That?

Seeing some bugs on your roses and not sure what they are? There are a lot of insects in the garden and most don't do any harm; it's important to know who the good and bad guys are, and those that are just a nuisance. Match the bug you want to identify to one of the photos below\* and click on the name below it to get more information.

## Good Bugs



[Green lacewing](#) adult & larvae



[Lady beetle](#) adult & larvae



[Syrphid fly](#) adult & larvae



[Soldier beetle](#)



[Spider](#)

## Nuisance Bugs



[Cucumber beetle](#)



[Earwig](#)



[Flea beetle](#)



[Leafcutter bee](#)



[Spittlebug](#)

## Bad Bugs



[Aphid](#)



[Caterpillar](#)



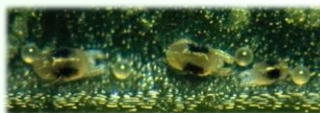
[Rose curculio](#)



[Rose leafhopper](#)



[Rose slug](#)



[Spider mite](#)



[Thrips](#)